

**Life Time Antique Collection  
Of Betty and Himus Sims  
Saturday, October 10, 10:00 AM  
Preview Friday, Oct, 9, 4-6 PM  
703 Flat Rock Road, Eastwood, KY**



**Ohio River Valley Auctions & Appraisal has been commissioned to sell this outstanding life time collection of antiques, folk art, early toys, furniture, advertising, early glass, stoneware, china and much more.**

**Furniture:** Half round table in blue gray paint, green arrow back bench, several pcs. of hickory furniture including settee and swing, pine apothecary cupboard, miniature painted pie safe, Federal game table, pine swing leg work table, seaman's chest, early pine Lazy Susan table, dough box on legs, glassed cheese case, blanket chest, saw buck table, stand tables, heart back Coke chairs, pie safe, early school desk, Shaker bed in red paint and much more.

**Folk Art and Primitives:** Outstanding cast metal glass eyed owl decoy made by Swisher-Soules, Decatur, IN (Pat. Pend.), Black Cat andirons, large early hand made 52" model of stern wheeler "Henry Bailey", selection of painted wooden bowls and pantry boxes, early baskets of all sizes, early flax break, dovetailed tape loom and other weaving related items, many early kitchen items in iron, copper & brass, early sampler, excellent early horse pull toy, painted doll cradle, red kerosene bucket, miniature lard tins and other advertising items, tin cream jug marked Zehnder Bros., St. Matthews, KY, several quilts.

**Early Glass, Stoneware, Porcelain:** Blown glass pillar mold syrup jug, 16" dia. blown glass cake/cheese dome, blown rolling pins, mocha rolling pin, large 13 3/8" dia. mocha/seaweed mixing bowl, large blue & white sponge ware mixing bowl made in Indiana, Rockingham, Jugtown ware, Carnival glass including blue Peacock on Fence (rare), Copeland Spode and other china, ironstone, cut glass, Weller Dickens Ware mug, art pottery, apothecary jars .

**Miscellaneous and Special Mention:** Uncle Tom mechanical bank in original paint, Victorian 3 wheel velocipede, Civil War Era child's boots, set of Little Col. Books, large working brass National cash register, Griswald iron rabbit cake mold, around 200 rare Edward Kemp lantern slides of historical and rural views of Kentucky including Lexington, Ashland, Mammoth Cave, early buildings and more, early brass andirons, custom 220V Country Charm kitchen stove (looks like old fashioned wood stove), like new Nilus LeClerc rug loom, framed RCA ship to ship telegrams announcing Germany's surrender, prints and paintings.

**Auctioneer's Note:** This is a very diverse auction with something for everyone. This is a partial list and we are still cataloging items. Sale will be held under tents with food and facilities on site.

**Terms:** Picture I.D. required for bidder's number; payment to be made by cash or check.

**Directions:** From Louisville take I-64 East to Gene Snyder Freeway North 1 mile to Eastwood Exit at Shelbyville Rd. (RT 60). Follow Rt. 60 3.1 miles to Flat Rock Road on Left then Flat Rock Road about 1 mile. Watch for signs.

**Call 812-786-1145 for information.**



This auction includes many pieces of folk art, early glass, stone ware, baskets, wooden ware in paint, furniture, historical memorabilia, primitives, china, mocha bowl and much more.



52" Long sternwheeler "Henry Bailey"

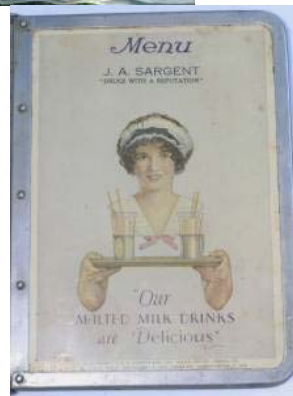


Candle mold, early scales, boxes, wrought iron, cast iron molds, pewter candle sticks and lots more.





Victorian Velocipede



Uncle Tom



